

CHANGES: Runway Guard Lights added on TWY G9

JEPPesen 2001-2023. ALL RIGHTS RESERVED.

ANTALYA, TURKIYE

ANTALYA INTL

Adt Elev 177'

N36 54.0 E030 47.6

JEPPesen 22 DEC 23 Eff 28 DEC 2023

LTAI/AYT

JEPPESSEN

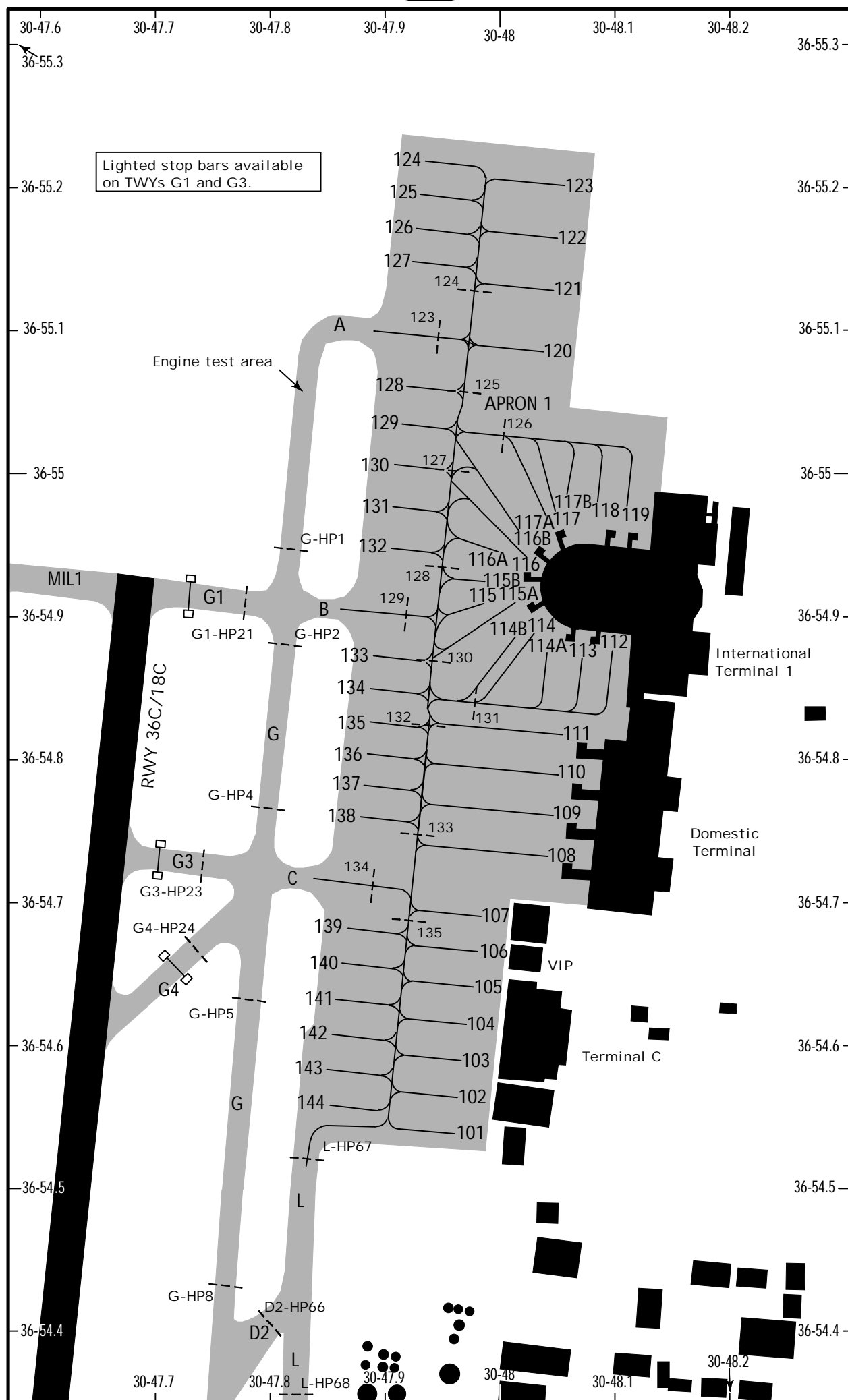
ANTALYA, TURKIYE

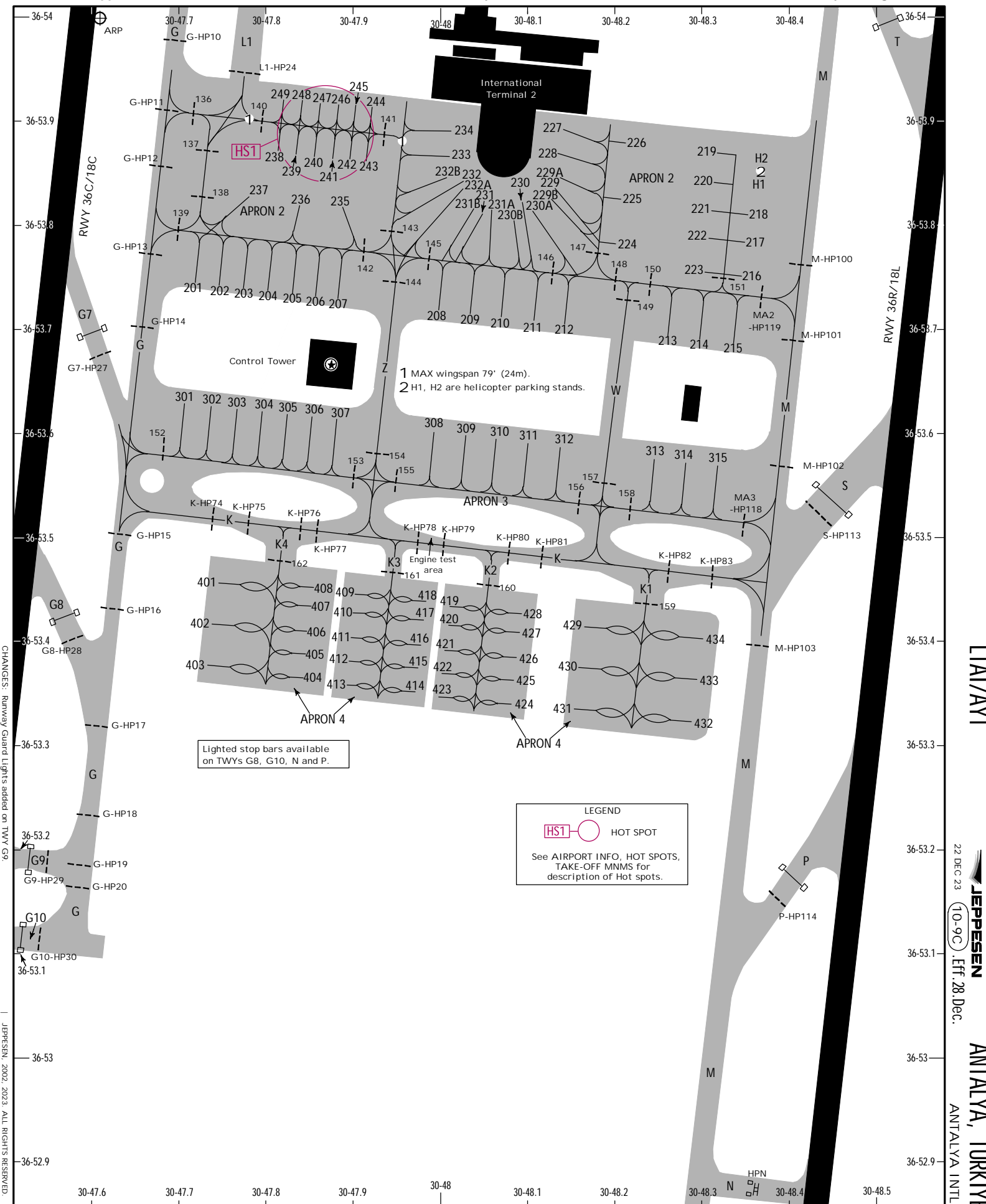
22 DEC 23

10-9B

.Eff.28.Dec.

ANTALYA INTL





CHANGES: Runway Guard Lights added on TWY G9.

JEPPesen, 2002, 2023. All rights reserved.

LTAI/AYT

22 DEC 23
JEPPesen
10-9C
Eff. 28 Dec.

ANTALYA, TÜRKİYE
ANTALYA INTL

LTAI/AYT

ANTALYA, **TURKIYE**
ANTALYA INTL

INS COORDINATES			
STAND No.	COORDINATES	STAND No.	COORDINATES
APRON 1		227 thru 229A	N36 53.9 E030 48.1
101	N36 54.5 E030 48.0	229 thru 231	N36 53.8 E030 48.1
102 thru 105	N36 54.6 E030 48.0	231B thru 232	N36 53.8 E030 48.0
106 thru 109	N36 54.7 E030 48.0	232B thru 234	N36 53.9 E030 48.0
110	N36 54.8 E030 48.0	235	N36 53.8 E030 47.9
111	N36 54.8 E030 48.1	236	N36 53.8 E030 47.8
112, 113	N36 54.9 E030 48.1	237 thru 240	N36 53.9 E030 47.8
114 thru 116A	N36 54.9 E030 48.0	241 thru 246	N36 53.9 E030 47.9
116B thru 117A	N36 55.0 E030 48.0	247 thru 249	N36 53.9 E030 47.8
117B thru 119	N36 55.0 E030 48.1	H1	N36 53.8 E030 48.4
120	N36 55.1 E030 48.0	H2	N36 53.9 E030 48.4
121	N36 55.1 E030 48.1	APRON 3	
122, 123	N36 55.2 E030 48.1	301, 302	N36 53.6 E030 47.7
124 thru 126	N36 55.2 E030 47.9	303 thru 306	N36 53.6 E030 47.8
127, 128	N36 55.1 E030 47.9	307	N36 53.6 E030 47.9
129 thru 131	N36 55.0 E030 47.9	308, 309	N36 53.6 E030 48.0
132 thru 134	N36 54.9 E030 47.9	310 thru 312	N36 53.6 E030 48.1
135 thru 138	N36 54.8 E030 47.9	313	N36 53.6 E030 48.2
139, 140	N36 54.7 E030 47.9	314, 315	N36 53.6 E030 48.3
141	N36 54.6 E030 47.9	APRON 4	
142 thru 144	N36 54.6 E030 47.8	401	N 36 53.5 E 030 47.7
APRON 2		402, 403	N 36 53.4 E 030 47.7
201, 202	N36 53.7 E030 47.7	404 thru 407	N 36 53.4 E 030 47.9
203 thru 206	N36 53.7 E030 47.8	408, 409	N 36 53.5 E 030 47.9
207	N36 53.7 E030 47.9	410 thru 413	N 36 53.4 E 030 47.9
208, 209	N36 53.7 E030 48.0	414 thru 417	N 36 53.4 E 030 48.0
210 thru 212	N36 53.7 E030 48.1	418	N 36 53.5 E 030 48.0
213 thru 215	N36 53.7 E030 48.3	419 thru 423	N 36 53.4 E 030 48.0
216 thru 218	N36 53.8 E030 48.4	424	N 36 53.3 E 030 48.1
219, 220	N36 53.9 E030 48.3	425 thru 428	N 36 53.4 E 030 48.1
221 thru 225	N36 53.8 E030 48.3	429 thru 431	N 36 53.4 E 030 48.2
226	N36 53.9 E030 48.3	432	N 36 53.3 E 030 48.3
		433, 434	N 36 53.4 E 030 48.3